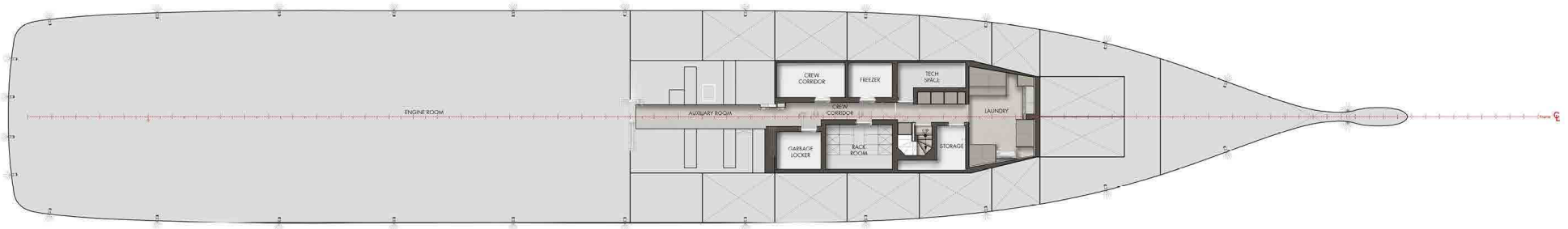


GENERAL ARRANGEMENT

UNDER LOWER DECK

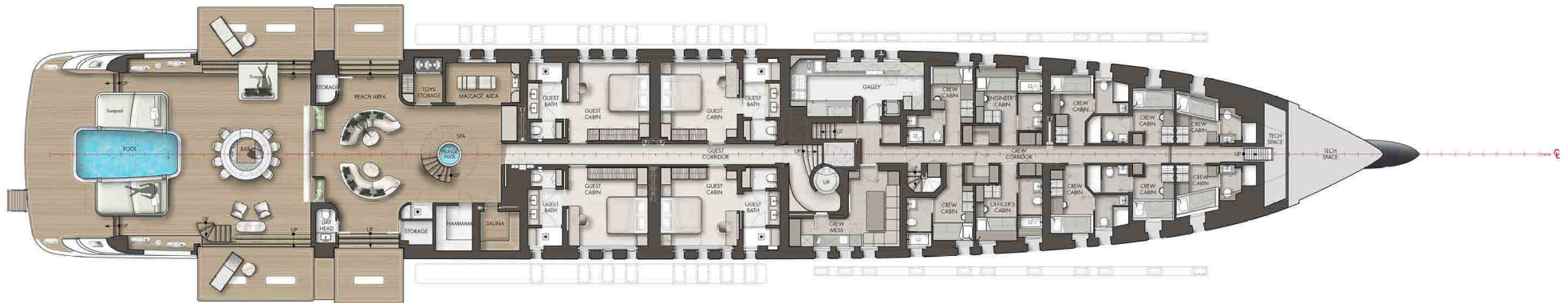


*Textures/materials and colors are indicative

DESIGN VISUALISATIONS AND 3D RENDERING ARE ARTISTIC IMPRESSIONS TO GIVE AN IDEAS OF INTENDED DESIGNS, MATERIAL AND COLORS. TECHNICAL SPECIFICATION, ACTUAL MATERIAL SAMPLES, COLOR SWATCHES AND TECHNICAL DRAWINGS ARE LEADING OVER DESIGN VISUALISATIONS AND 3D RENDERINGS.
CONFIDENTIAL: THE PRESENT DOCUMENT IS TO BE INTENDED FOR INTERNAL USE EXCLUSIVELY, THUS IT NEEDS TO BE DEEMED AS CONFIDENTIAL MATERIAL. IT IS PROHIBITED TO DISTRIBUTE, REPRODUCE AND/OR DISCLOSE TO THIRD PARTIES, DIRECTLY OR INDIRECTLY, ALSO BY WAY OF ORAL DISCLOSURE OR THIRD-PARTY INTERVENTION. ANY DAMAGE MUST BE COMPENSATED.

GENERAL ARRANGEMENT

LOWER DECK



*Textures/materials and colors are indicative

DESIGN VISUALISATIONS AND 3D RENDERING ARE ARTISTIC IMPRESSIONS TO GIVE AN IDEA OF INTENDED DESIGNS, MATERIAL AND COLORS. TECHNICAL SPECIFICATION, ACTUAL MATERIAL SAMPLES, COLOR SWATCHES AND TECHNICAL DRAWINGS ARE LEADING OVER DESIGN VISUALISATIONS AND 3D RENDERINGS.
CONFIDENTIAL THE PRESENT DOCUMENT IS TO BE INTENDED FOR INTERNAL USE EXCLUSIVELY, THUS IT NEEDS TO BE DEEMED AS CONFIDENTIAL MATERIAL IT IS PROHIBITED TO DISTRIBUTE, REPRODUCE AND/OR DISCLOSE TO THIRD PARTIES, DIRECTLY OR INDIRECTLY, ALSO BY WAY OF ORAL DISCLOSURE OR THIRD-PARTY INTERVENTION. ANY DAMAGE MUST BE COMPENSATED.

GENERAL ARRANGEMENT

MAIN DECK



*Textures/materials and colors are indicative

DESIGN VISUALISATIONS AND 3D RENDERING ARE ARTISTIC IMPRESSIONS TO GIVE AN IDEAS OF INTENDED DESIGNS, MATERIAL AND COLORS. TECHNICAL SPECIFICATION, ACTUAL MATERIAL SAMPLES, COLOR SWATCHES AND TECHNICAL DRAWINGS ARE LEADING OVER DESIGN VISUALISATIONS AND 3D RENDERINGS. CONFIDENTIAL THE PRESENT DOCUMENT IS TO BE INTENDED FOR INTERNAL USE EXCLUSIVELY, THUS IT NEEDS TO BE DEEMED AS CONFIDENTIAL MATERIAL IT IS PROHIBITED TO DISTRIBUTE, REPRODUCE AND/OR DISCLOSE TO THIRD PARTIES, DIRECTLY OR INDIRECTLY, ALSO BY WAY OF ORAL DISCLOSURE OR THIRD-PARTY INTERVENTION. ANY DAMAGE MUST BE COMPENSATED.

GENERAL ARRANGEMENT

OWNER DECK



*Textures/materials and colors are indicative

DESIGN VISUALISATIONS AND 3D RENDERING ARE ARTISTIC IMPRESSIONS TO GIVE AN IDEAS OF INTENDED DESIGNS, MATERIAL AND COLORS. TECHNICAL SPECIFICATION, ACTUAL MATERIAL SAMPLES, COLOR SWATCHES AND TECHNICAL DRAWINGS ARE LEADING OVER DESIGN VISUALISATIONS AND 3D RENDERINGS.
CONFIDENTIAL THE PRESENT DOCUMENT IS TO BE INTENDED FOR INTERNAL USE EXCLUSIVELY, THUS IT NEEDS TO BE DEEMED AS CONFIDENTIAL MATERIAL IT IS PROHIBITED TO DISTRIBUTE, REPRODUCE AND/OR DISCLOSE TO THIRD PARTIES, DIRECTLY OR INDIRECTLY, ALSO BY WAY OF ORAL DISCLOSURE OR THIRD-PARTY INTERVENTION. ANY DAMAGE MUST BE COMPENSATED.

GENERAL ARRANGEMENT

BRIDGE DECK

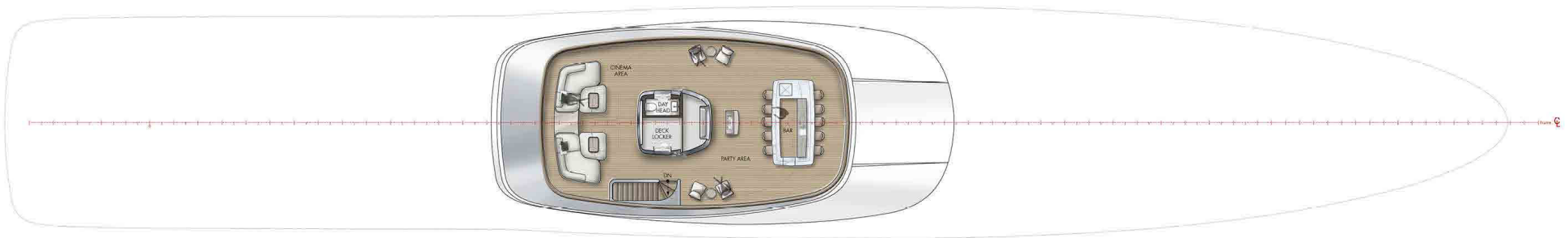


*Textures/materials and colors are indicative

DESIGN VISUALISATIONS AND 3D RENDERING ARE ARTISTIC IMPRESSIONS TO GIVE AN IDEAS OF INTENDED DESIGNS, MATERIAL AND COLORS. TECHNICAL SPECIFICATION, ACTUAL MATERIAL SAMPLES, COLOR SWATCHES AND TECHNICAL DRAWINGS ARE LEADING OVER DESIGN VISUALISATIONS AND 3D RENDERINGS.
CONFIDENTIAL THE PRESENT DOCUMENT IS TO BE INTENDED FOR INTERNAL USE EXCLUSIVELY, THUS IT NEEDS TO BE DEEMED AS CONFIDENTIAL MATERIAL IT IS PROHIBITED TO DISTRIBUTE, REPRODUCE AND/OR DISCLOSE TO THIRD PARTIES, DIRECTLY OR INDIRECTLY, ALSO BY WAY OF ORAL DISCLOSURE OR THIRD-PARTY INTERVENTION. ANY DAMAGE MUST BE COMPENSATED.

GENERAL ARRANGEMENT

SUN DECK



*Textures/materials and colors are indicative

DESIGN VISUALISATIONS AND 3D RENDERING ARE ARTISTIC IMPRESSIONS TO GIVE AN IDEAS OF INTENDED DESIGNS, MATERIAL AND COLORS. TECHNICAL SPECIFICATION, ACTUAL MATERIAL SAMPLES, COLOR SWATCHES AND TECHNICAL DRAWINGS ARE LEADING OVER DESIGN VISUALISATIONS AND 3D RENDERINGS.
CONFIDENTIAL: THE PRESENT DOCUMENT IS TO BE INTENDED FOR INTERNAL USE EXCLUSIVELY, THUS IT NEEDS TO BE DEEMED AS CONFIDENTIAL MATERIAL. IT IS PROHIBITED TO DISTRIBUTE, REPRODUCE AND/OR DISCLOSE TO THIRD PARTIES, DIRECTLY OR INDIRECTLY, ALSO BY WAY OF ORAL DISCLOSURE OR THIRD-PARTY INTERVENTION. ANY DAMAGE MUST BE COMPENSATED.