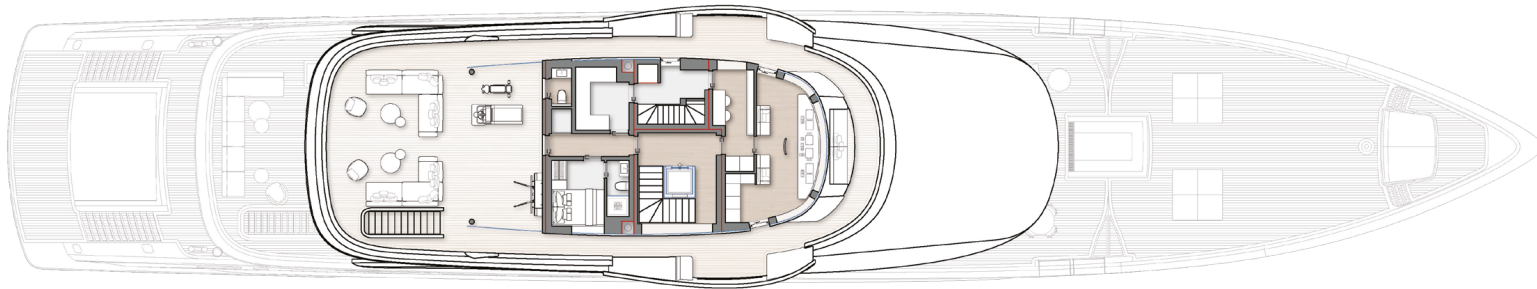


General Arrangement - Proposed Configuration

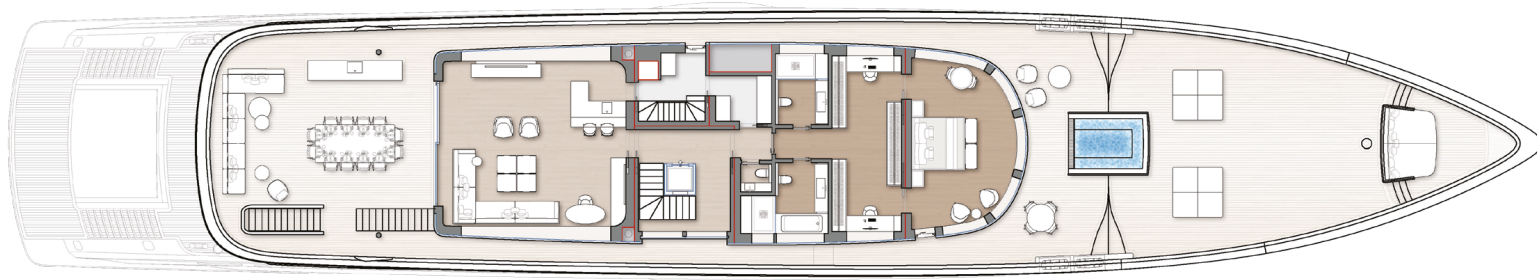


General Arrangement - Proposed Configuration

BRIDGE DECK

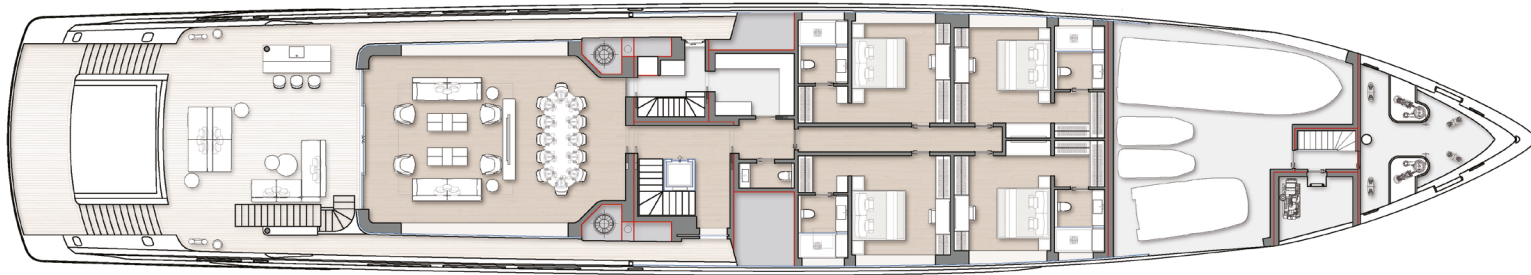


UPPER DECK

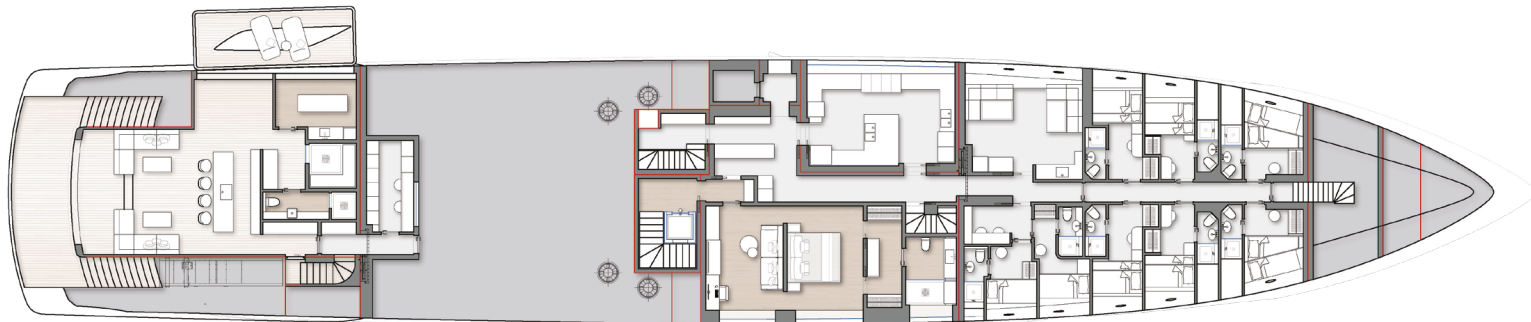


General Arrangement - Proposed Configuration

MAIN DECK

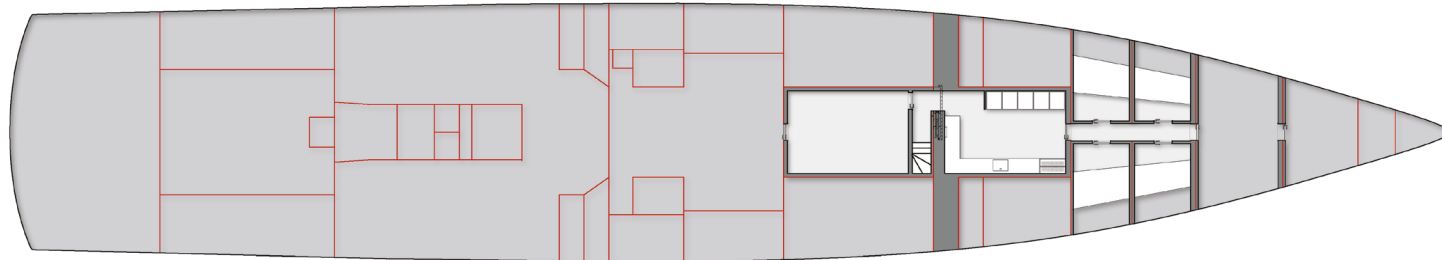


LOWER DECK



General Arrangement - Proposed Configuration

UNDER LOWER DECK



General Arrangement Plans may include options and upgrades that are not to be considered as standard supply.



Technical Features

| | |
|--|--|
| CONSTRUCTION MATERIAL | STEEL / ALUMINIUM |
| LENGTH OVERALL (LOA) | 61.50M / 201' 9'' |
| MAXIMUM BEAM | ABOUT 10.85M / 35' 7" |
| MAXIMUM DRAFT | ABOUT 3.00M / ABOUT 9' 10" |
| GROSS TONNAGE | 1,140GT APPROX. |
| FUEL CAPACITY | 100,000L / 26,420US GALS |
| FRESH WATER CAPACITY | 22,000L / 5,810US GALS |
| STANDARD PROPULSION | |
| MAIN ENGINES (DIESEL MECHANICAL PROP.) | 2 X CAT C32 1193KW |
| ALTERNATIVE PROPULSION (AS OPTION) |  E-MODE HYBRID (PTO/PTI) WITH LI-ION BATTERIES AND CPP PROPELLERS |
| MAX SPEED | 15.5KNOTS |
| CLASSIFICATION | LLOYD'S REGISTER OF SHIPPING |
| RANGE | @11KNOTS 4,500NAUTICAL MILES |
| GENERATORS | 2 X CAT C9 200KW 50HZ |
| BOW THRUSTER | 1 X ELECTRIC MOTOR DRIVEN, 180KW |
| STABILIZERS | FOR UNDERWAY AND ZERO SPEED (AT ANCHOR) CONDITIONS |
| NAVAL ARCHITECTURE | AZIMUT-BENETTI, BENETTI SHIPYARD |
| EXTERIOR STYLING & CONCEPT | CASSETTA YACHT DESIGNERS |
| INTERIOR DESIGN | BENETTI INTERIOR STYLE DEPARTMENT |
| ACCOMMODATION FOR OWNER & GUESTS | 12 PERSONS 6 CABINS |
| ACCOMMODATION FOR CREW | 15 PERSONS 9 CABINS |

The technical data shown here are intended to be preliminary and they are subject to future amendments based on the development of the project.

