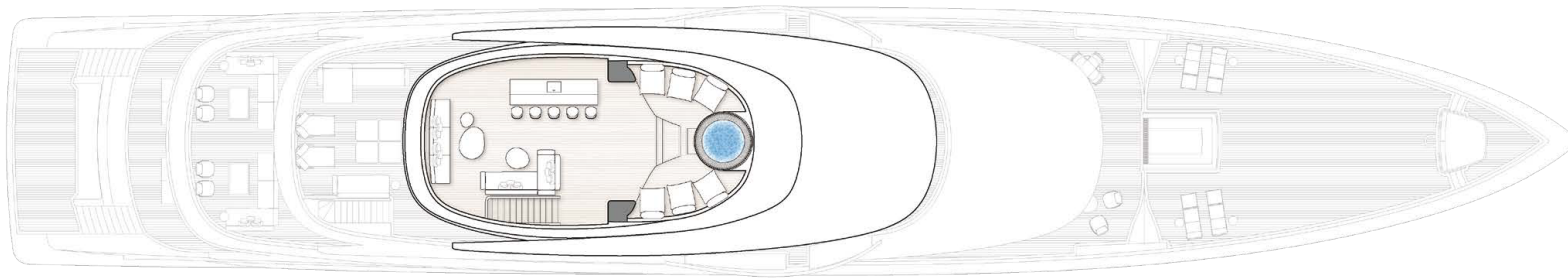


General Arrangement - Proposed Configuration

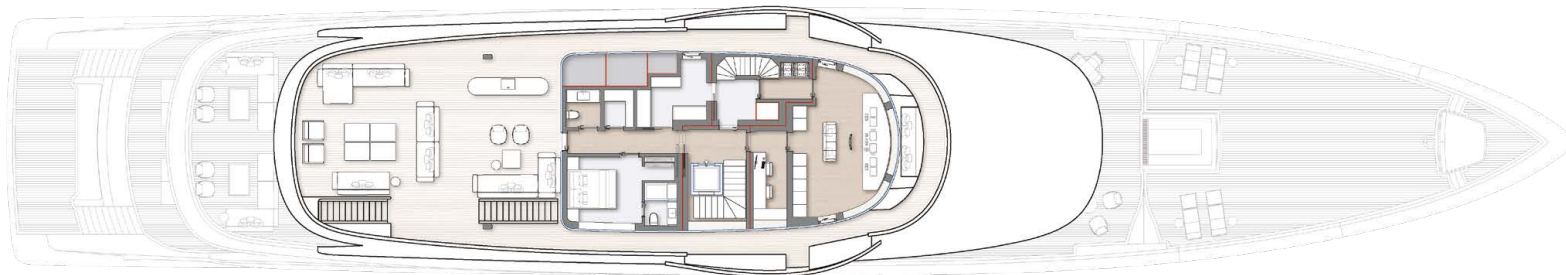


General Arrangement - Proposed Configuration

SUN DECK

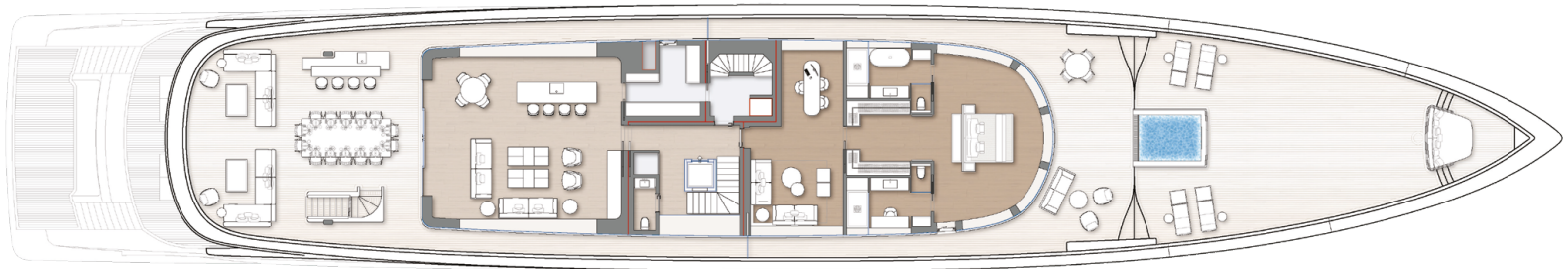


BRIDGE DECK

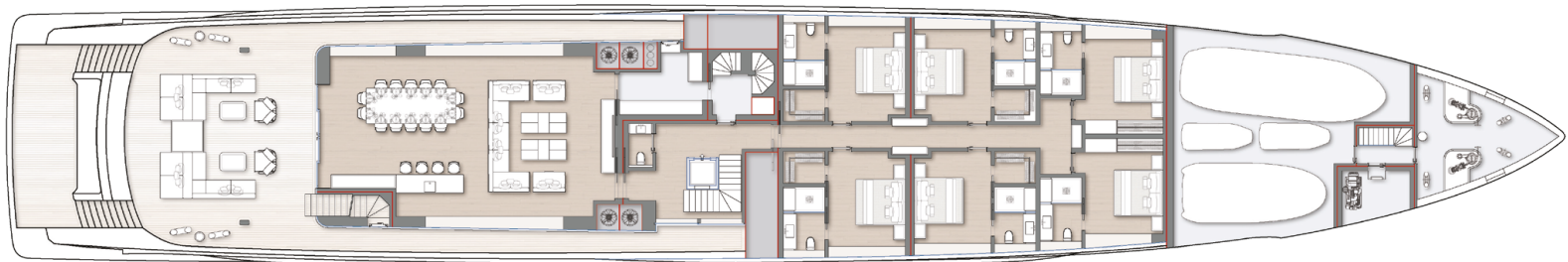


General Arrangement - Proposed Configuration

UPPER DECK

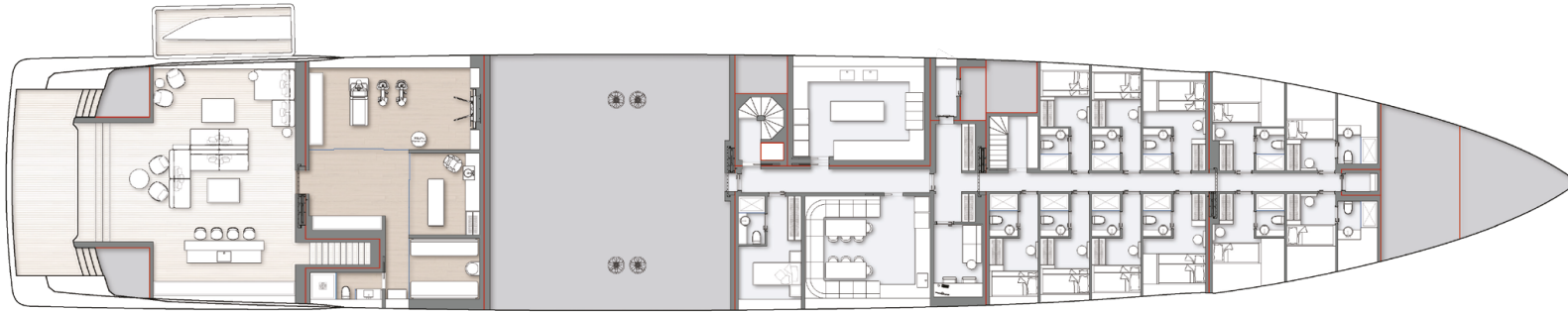


MAIN DECK

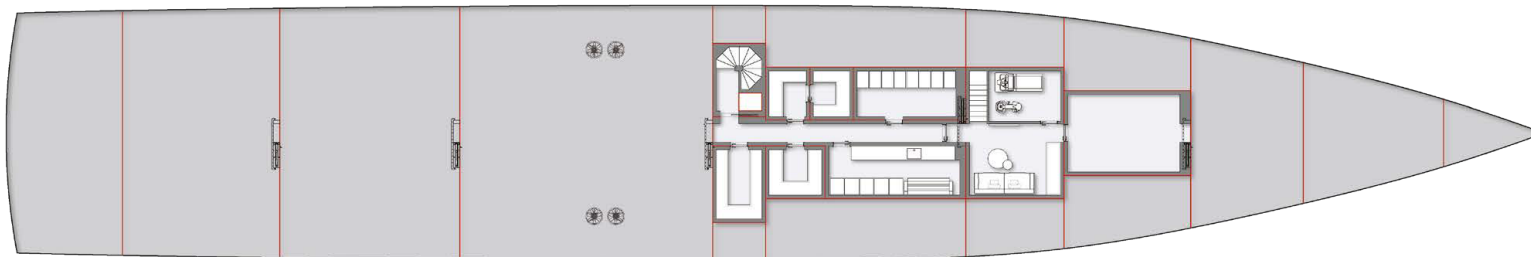


General Arrangement - Proposed Configuration

LOWER DECK




UNDER LOWER DECK



General Arrangement Plans may include options and upgrades that are not to be considered as standard supply.



Technical Features

CONSTRUCTION MATERIAL	STEEL / ALUMINIUM
LENGTH OVERALL (LOA)	68.00M / 223' 1''
MAXIMUM BEAM	11.50M / 37' 9''
MAXIMUM DRAFT	3.15M / 10' 4''
GROSS TONNAGE	ESTIMATED 1,390GT
FUEL CAPACITY	110,000L / 29,060US GALS
FRESH WATER CAPACITY	24,000L / 6,340US GALS
STANDARD PROPULSION	
MAIN ENGINES (DIESEL MECHANICAL PROP.)	2 X CAT C3512E IMO TIER III 1350KW @ 1600RPM
ALTERNATIVE PROPULSION (AS OPTION)	 E-MODE HYBRID (PTO/PTI) WITH LI-ION BATTERIES AND CPP PROPELLERS
MAX SPEED	16KNOTS
CLASSIFICATION	LLOYD'S REGISTER OF SHIPPING
RANGE	@12KNOTS 4,500NAUTICAL MILES
GENERATORS	3 X CAT C7 150KW EACH 50HZ
BOW THRUSTER	1 X ELECTRIC MOTOR DRIVEN, 200KW
STABILIZERS	FOR UNDERWAY AND ZERO SPEED (AT ANCHOR) CONDITIONS
NAVAL ARCHITECTURE	AZIMUT-BENETTI, BENETTI SHIPYARD
EXTERIOR STYLING & CONCEPT	CASSETTA YACHT DESIGNERS
INTERIOR DESIGN	BENETTI INTERIOR STYLE DEPARTMENT
ACCOMMODATION FOR OWNER & GUESTS	12 PERSONS 7 CABINS
ACCOMMODATION FOR CREW	19 PERSONS 14 CABINS

The technical data shown here are intended to be preliminary and they are subject to future amendments based on the development of the project.

RELEASE 03.2023



B. CENTURY 68M