



MISSING LINK



Main Stair

OVERVIEW

CHRISTENSEN CUSTOM 142' SERIES

Length Overall:	142'1" (43.3m)
Length at Waterline:	122'10" (37.22m)
Beam:	29'6" (9m)
Draft (Full):	8'0" (2.4m)
Draft (Light):	7'6" (2.4m)
Type:	Motor Yacht (Ocean Going)
Tonnage:	480 Gross Tons
Builder:	Christensen Shipyards, Ltd.
Naval architecture:	Christensen Shipyards, Ltd.
Exterior styling:	Christensen Shipyards, Ltd.
Interior design:	Carol Williamson & Associates
Construction:	Hull and Superstructure: Fiberglass Composite
Classification:	ABS, A1 Commercial Yacht Service LY2 under 500gt (build to)
Main Engines:	MTU 12V 4000 (4 cycle), M53 IMO II Emission compliant Continuous Duty Rated 1851 BHP @ 1800RPM Per Engine
Reduction Gearboxes:	(2) ZF Model 4650-A, Remote - Mounted
Stabilizers:	Quantum "Zero Speed" Model QC-1500 (2x) 2.7m fins
Electrical:	(3) 99kw CAT C4.4 generators (new in 2021)
Speed:	Maximum: 15 knots
Cruising:	12-14 knots
Tankage:	Fuel: 12,000 US Gallons (45.425 liters)
Water:	3,400 US Gallons (12.870 liters)
Range:	3,000 nautical miles (estimated)
Accommodations:	Sleeps up to 12 in the owner's party in 5 staterooms, plus crew accommodations for up to 8 in 4 cabins
Elevator:	Services all 4 Decks
Flag:	Cayman Islands pleasure yacht
Location:	Fort Lauderdale, FL
Price:	\$24,950,000



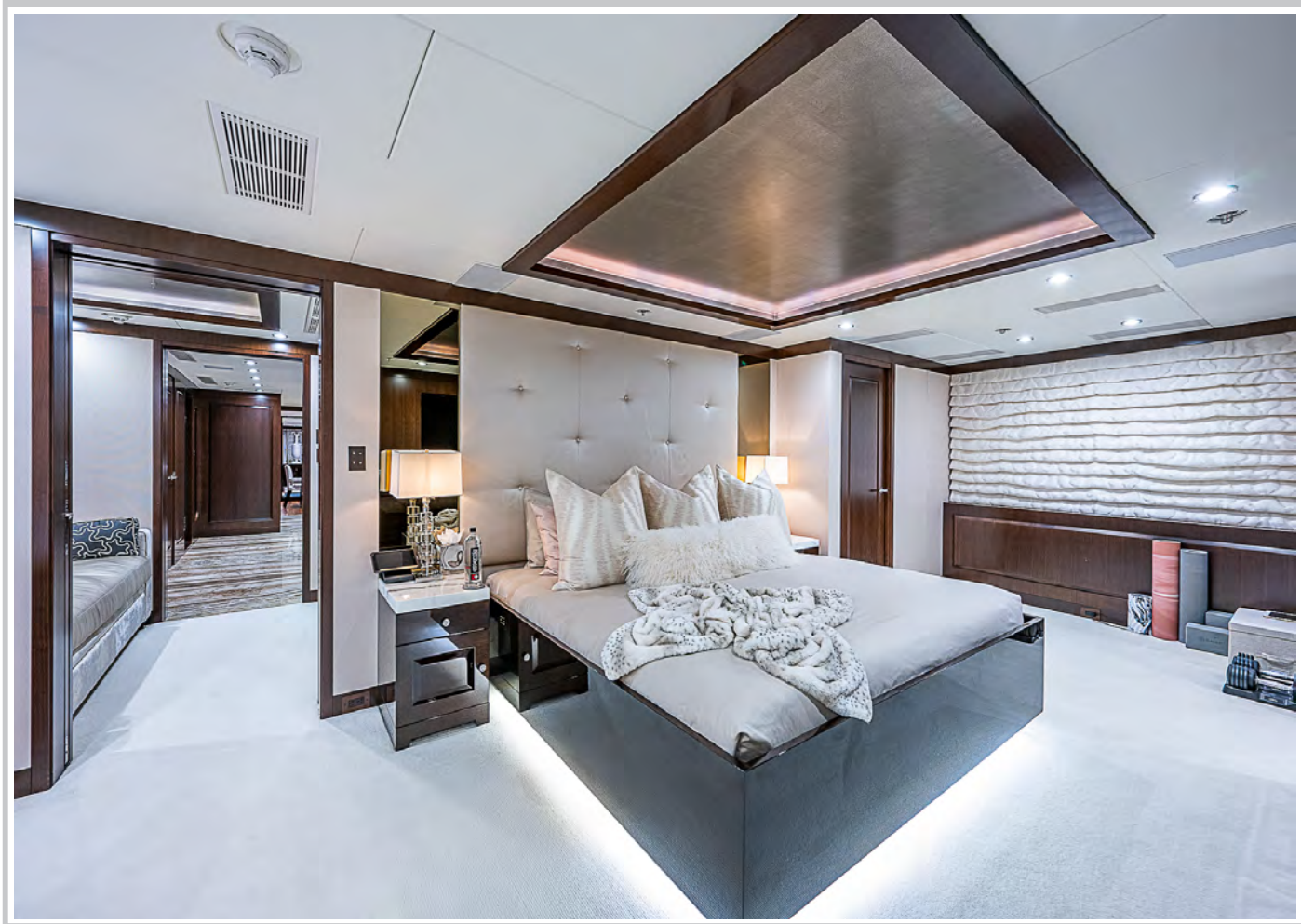
AFT DECK



MAIN SALON



FORMAL DINING



OWNER STATEROOM



Owner His/Her Head



Owner Stateroom Sitting Area

ACCOMMODATIONS

The vessel has accommodations for Twelve Guests in (5) staterooms, one "Owner's suite", two VIP king bed staterooms, one guest queen room, and one guest twin room with Pullman berth in each, and Eight Crew in (4) cabins.

Owner

The Owner's full width suite is located on the main deck. Owner's office/sitting area is to starboard upon entering the owner suite hallway, which then leads forward into the owner suite. This is a huge suite comprising two large walk-in closets, vanity and his/her en suite bathrooms. There is a large Jacuzzi tub on the port side. The room is an elegant mix of fabric panels and high gloss finished wainscot.

Guests

There are (4) Large Guest Cabins located on the lower deck, two VIP king bed staterooms, one guest queen room, and one guest twin room with Pullman berth in each. All (4) Cabins have en suite bathrooms with spacious marble showers.

Crew

There are (3) upper/lower crew cabins forward of the spacious crew's quarters on the lower deck, plus a large captain's cabin aft of the wheelhouse, all with en suite bathrooms. Crew access to all decks is via a dedicated crew stairway.

Elevator services all 4 decks for guests.



VIP GUESTROOM



SKYLOUNGE



SKYLOUNGE AFT DECK



AL FRESCO DINING



PILOTHOUSE



SUN DECK





GALLEY & LAUNDRY

Main Galley Equipment

Cooking Equipment:

- (1) 6-burner Professional Cooktop
- (1) Extraction Hood with fire suppression system
- (1) WOLF E-Series Oven (updated in 2021)
- (1) Microwave Oven
- (1) Glo-Ray infrared food warmer
- (1) Microwave Oven

Refrigeration/Freezer:

- (1) Sub-Zero Refrigerator plus walk in Freezer

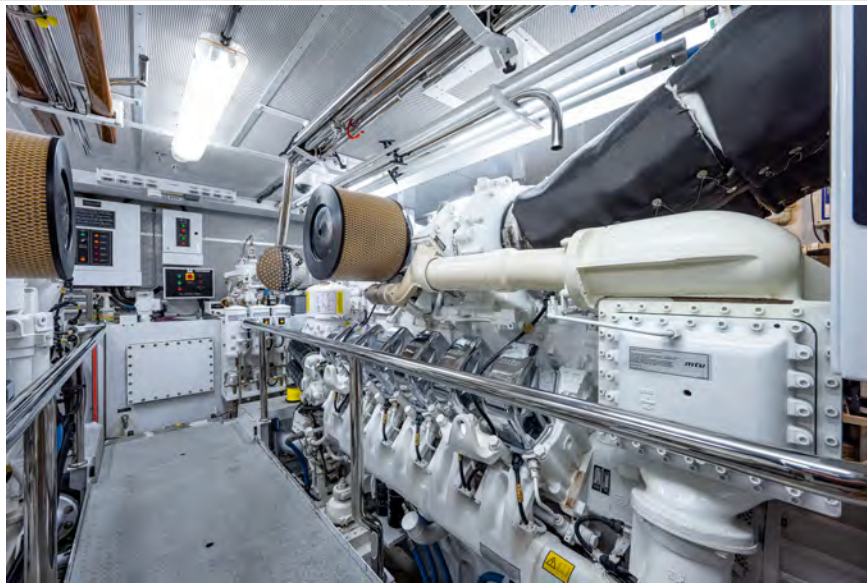
Dishwasher/Trash Compactor:

- (1) Full Size Miele Dishwasher
- (2) Trash Compactors

Crew Galley Equipment

Laundry Equipment

- (1) Microwave
- (2) Washers and (2) Dryers (Speed Queen – updated in 2023)



Engine Room



Engine Room

MACHINERY

ENGINES, GENERATORS, OTHER MACHINERY

Main Engines

Engine Type: (2) MTU 12V 4000 Series, (4 cycle) M53 IMO II emission compliant Continuous Duty Rated with pre-lube & coolant pre-heat systems 1851 BHP @ 1800RPM per engine

Gearboxes for Main Engines: (2) ZF Model 4650-A 3.04:1 ratio 8° down angle remote mounted with torsional couplings, trailing pumps & trolling valves

Propellers: VEEM - 5 Blades, NiBrAl, CNC machining

Generators & Electricity

Output: 208 Volts, 3 phase, 60 Hz

Generators: (3) CAT C4.4 99kw (1800 RPM), EPA Tier 3 compliant with dry stacks

Shore Power: Hyak Electroworks – Integrated shore conversion system with Auto Paralleling and Seamless Transfer; Converts any voltage and Hz.

Batteries: (2) 24 Volt DC Battery Banks (Sealed Gel Cell)

Air Conditioning

Type: CruiseAir (36 Ton), with gateway network control interface

Other Machinery

Watermakers: (2) 2000 USGPD per (15,142 liters)

Stabilizers: “Zero Speed-At Anchor” Stabilizers Quantum Model QC 1500 with ARC-3001 electronic control unit. – (2) 2.7m2 Stainless Steel Fins.

Bow Thruster: ABT-TRAC-24” Dual Prop (115hp)

Stern Thruster: ABT-TRAC-20” Dual Prop (75hp)

Steering System: (2) Jastram with emergency manual helm pump

Fuel Separator: Alfa Laval (MAB-103)

Fuel Filtration: (1) Gulfgate Coalescing Filter (model GFS 2513M)

(1) Algae-X fuel conditioner

(1) Tecnicomar, Ecomar Sewage Water

Sewage System: (1) Tecnicomar MSD- IMO 2010 Resolution

Fresh Water System: (2) Grundfos Pumps, w/ Silver Ion and UV sterilization

Bilge Water Filtration: (1) SkimOil Inc., model “Brute” Heavy Duty, USCG, ABS, & IMO approved

Hydraulic system: Nautical Structures Power Packs



Spot Zero Water Conditioning



Engineer Desk

LAZARETTE



Sky lounge Aft Deck



Sky lounge Bar



Elevator (Services all 4 Decks)

ELECTRONICS

COMMUNICATION, NAVIGATION, MONITORING & ENTERTAINMENT

Communication System

SATcom:	KVH Inmarsat Broadband TracPhone FB500
VSAT:	TracPhone V7 mini VSAT
Telephone System:	Panasonic with intercom and paging
SSB:	Furuno FS 1570
VHF:	(1) Furuno FM8800 VHF; (2) ICOM M604B
Cellular Phone System:	Erickson W25 Quad Band
Loud Hailer:	RayMarine 430
Network Access:	Great Circle Systems NAS 3000; Automatically searches all network sources for the most cost effective route for internet traffic
Wireless Network:	(8) 802.11 a/b/g Wireless Access Points with built in power over Ethernet; System provides Wi-Fi access for the entire yacht

Entertainment System

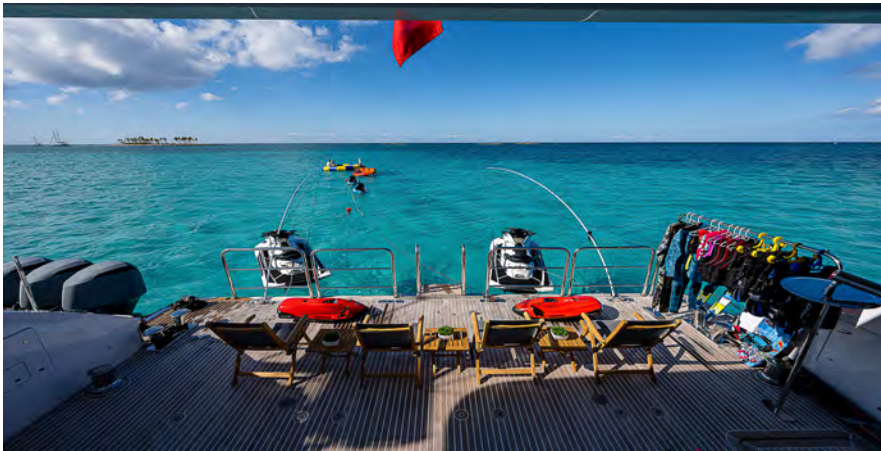
System installed by: Interior Audio Inc.
Audio/Video Equipment Summary: (2) SeaTel 5004 Sat TV antennas; Functional control of the entire A/V system is through Crestron touch panels located in every room, as well as U.S., Caribbean, and European satellite television. All Crestron, and receiver equipment is located in a central A/V room and networked throughout the yacht.

Navigation System

Navigation Electronics:	Johnson Electronics & Machinery, Inc.
Radar:	(1) Furuno X Band; (1) Furuno S Band (both with ARPA)
Gyrocompass:	Simrad CG85
Autopilot:	Simrad AP80
Depth Sounder:	(1) B&G; (1) Furuno FCV1200BB Color Video Sounder
GPS:	Furuno GPT50D GPS Navigation System
Weather Fax:	Furuno Felcom 15 Standard-C
Chart Plotter:	TimeZero
Wind/Speed Log:	B&G HY3-SYST-I H3000 Cruiser, with (4) additional FFD's
Navtex:	Furuno NX700A with printer
Night Vision Camera:	NVT model 5100 Thermal Imaging Camera with stabilizer
Bridge Watch System:	Furuno BR-500 - New Requirement

Monitoring System

System by: Hyak Electroworks
Systems Integration Network: Hyak Electroworks - SIMnet, Integration and Monitoring Network connects the vessels programmable systems to allow remote monitoring, data logging, power management, and diagnostic.



Sun Deck



Owner's Tender

TENDERS & DECK EQUIPMENT

TENDERS & TOYS, DECK EQUIPMENT, SECURITY, SAFETY

Tenders & Toys

Tender:

(1) Owners's Tender, 21' 0" Grady White

(1) Servitec 420 IRB Rescue Boat per CISR requirements
(2) Wave Runners

Dive Gear:

(1) Brownies dive compressor

Deck Equipment

Anchor Windlass System:

(2) Maxwell SY-22 Electric

Aft Warping Capstans:

(4) Maxwell VC 4000

Anchor:

(2) 300KG "Pool N" Type, balanced Anchors

Anchor Chain:

(2) 500 feet of 20.5mm chain

Boat Crane and Davits:

(1) Nautical Structures with 5000 lbs. (2,270 kg) capacity
(1) Nautical Structures with 3500 lbs. (1,587 kg) capacity

Passerelle:

(1) Hydraulic Telescoping with 20' (6 meter) extension

Swimming Platform:

Integral to the Transom

Security, Fire Fighting & Safety Equipment

Security Equipment

CCTV System:

Networked through the Crestron A/V control system

Cameras:

(12) CCTV Cameras - visible in crew areas and wheelhouse

Monitors:

Fire Fighting Equipment

Fire Control System:

Optec Medium Pressure Sprinkler System

Fire Extinguishers:

(9) Carbon Dioxide; (6) Dry Chemical

Alarms:

Christensen Integrated Control System, with detectors located in every room

Safety Equipment

Life Rafts:

(4) Zodiac 16 person; USCG and SOLAS approved (4)

Life Rings:

SOLAS approved

EPIRBs:

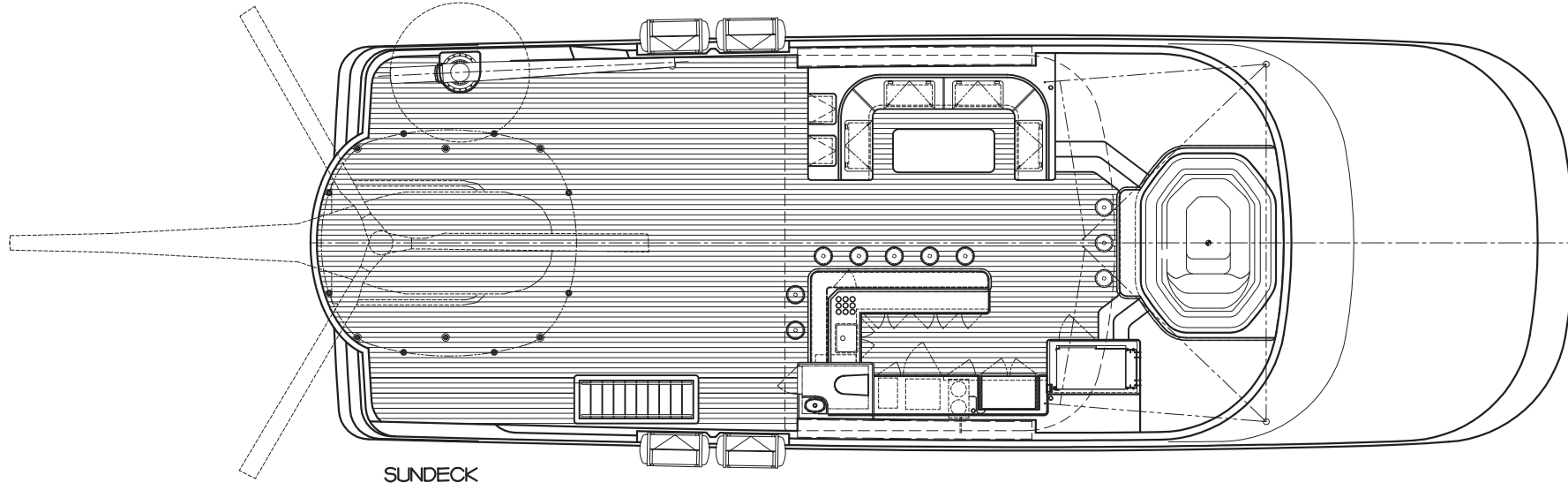
ACR 2742 (CAT 1, with GPS)

Flares:

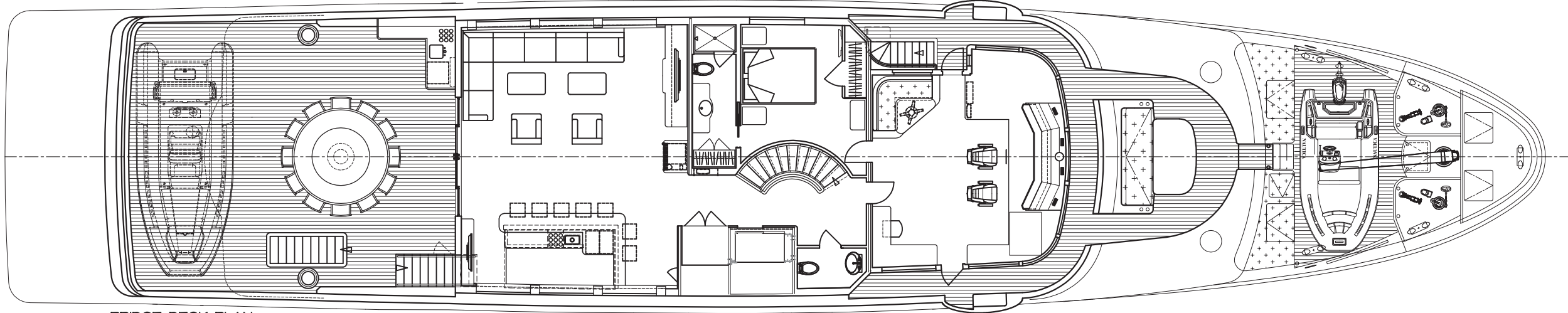
Per MCA requirements



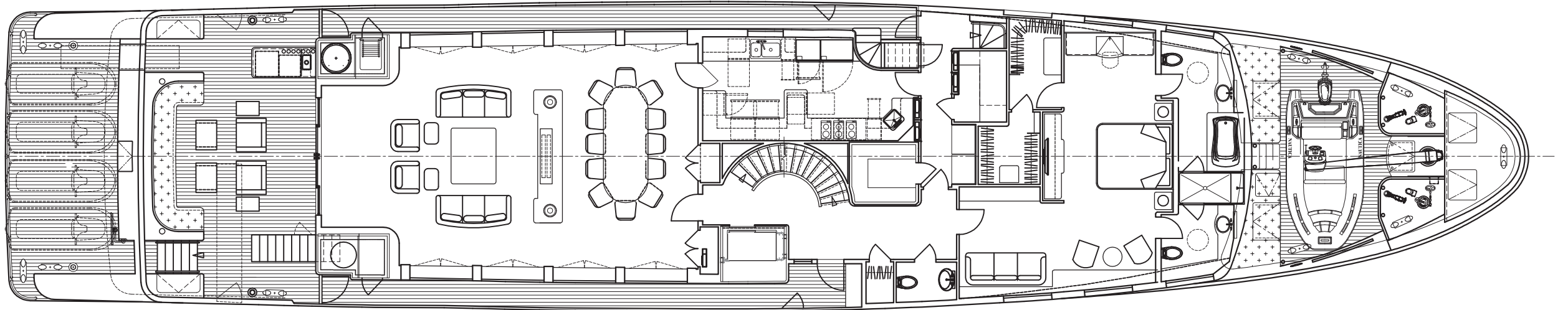
TENDER & TOYS



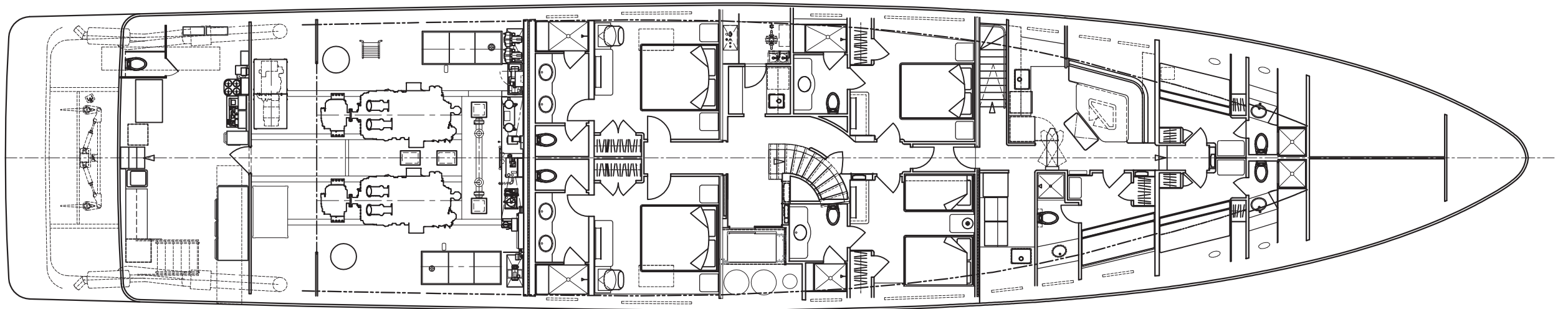
SUNDECK



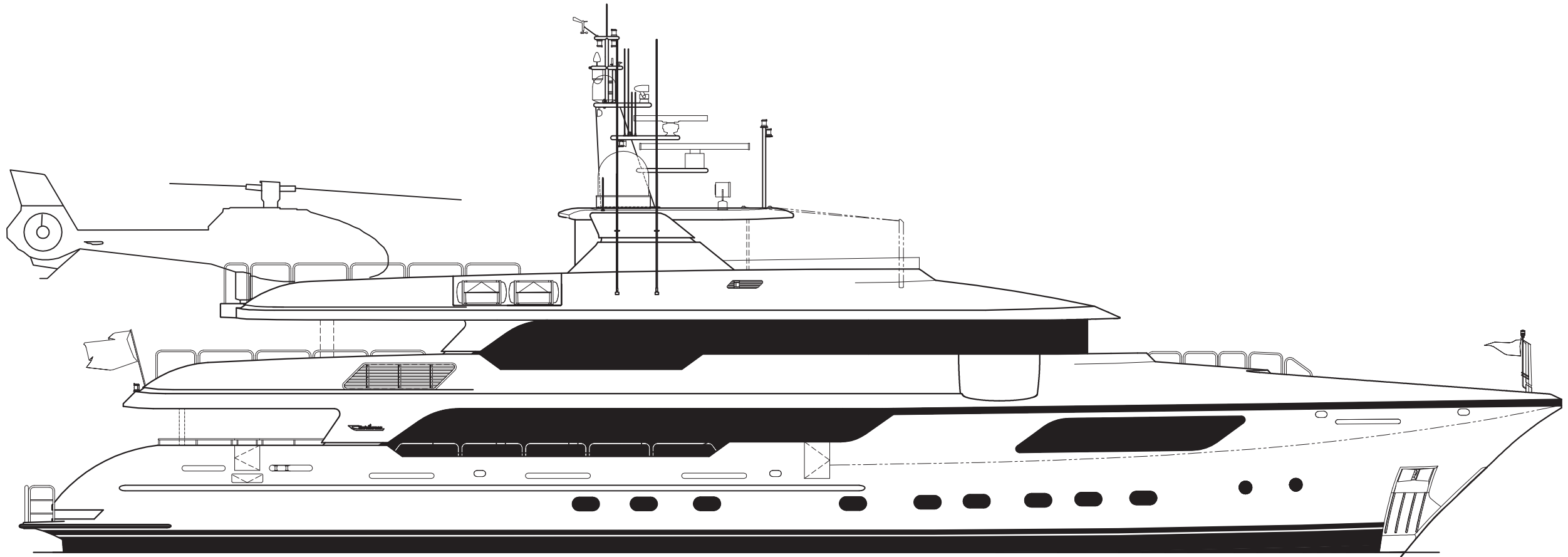
BRIDGE DECK PLAN



MAIN DECK PLAN



LOWER DECK PLAN



CONSTRUCTION

CONSTRUCTION, DIMENSIONS, CAPACITIES, SPEED

Construction

Hull:	Vacuum Infused Composite	
Superstructure:	Vacuum Infused Composite	

Dimensions

Length Overall (L.O.A.):	142' 0"	(43.3 meters)
Length at Waterline (L.W.L.):	122' 10"	(37.21 meters)
Beam (molded):	29' 6"	(9 meters)
Draft (Full Load):	8' 0"	(2.4 meters)
Draft (Light Load):	7' 6"	(2.28 meters)
Tonnage:	Approximately 480 Gross Tons	
Displacement(Full Load):	800,000 lbs.	(362,874 kg)

Capacities

Fuel capacity:	12,000 US Gallon	(45,425 liters)
Fresh water capacity:	2,000 + 1400 Trim Tank US Gallon (total 12,870 liters)	
Watermakers:	4000 US Gallon Per Day	(15,142 liters)
Lube Oil:	300 US Gallon	(1,136 liters)
Waste Oil:	300 US Gallon	(1,136 liters)

Speed

Maximum:	16 knots
Cruising:	14 knots
Range:	3000 Nautical Miles (estimated)

Preliminary Listing - not all capacities, ranges, specifications, details and drawings are guaranteed and are subject to change. Contact Broker for more information.